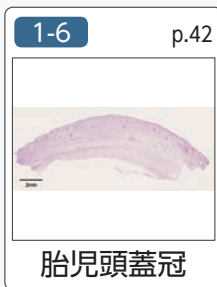
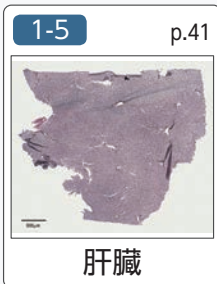
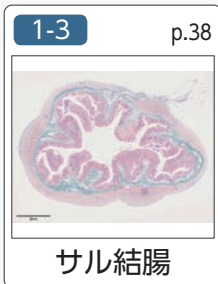
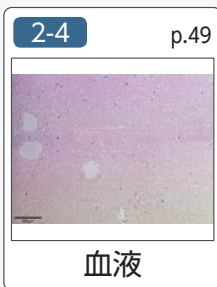
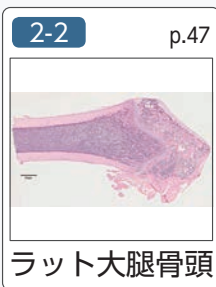
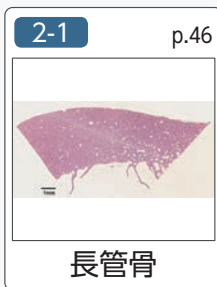


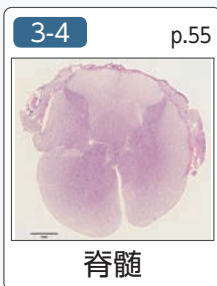
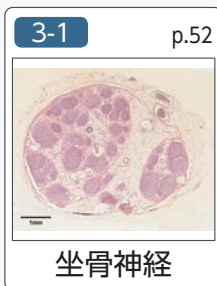
第 1 章 上皮組織と結合組織



第 2 章 特殊結合組織



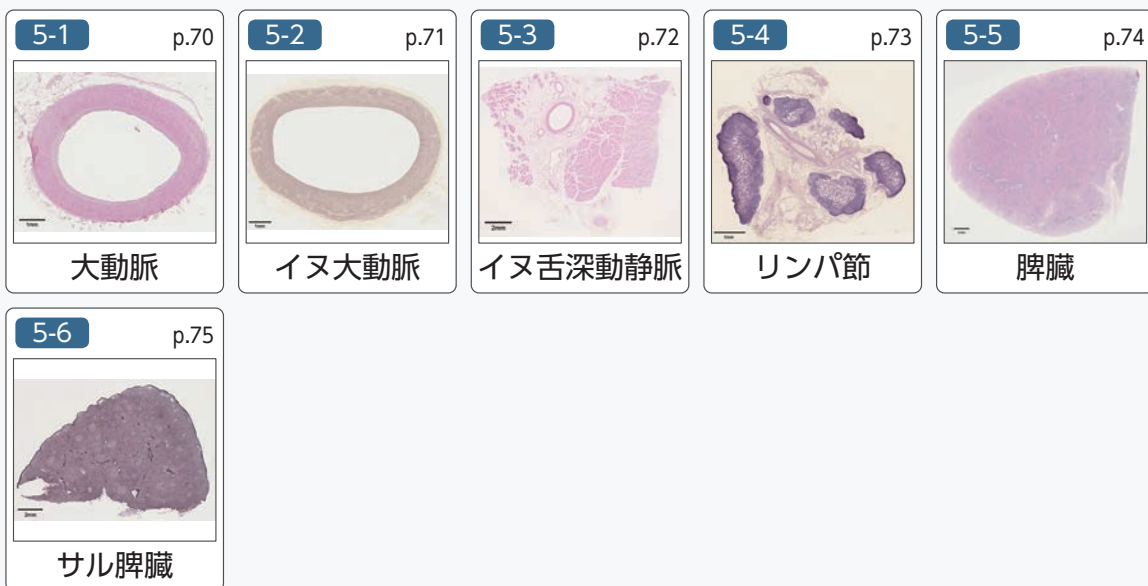
第 3 章 神経組織



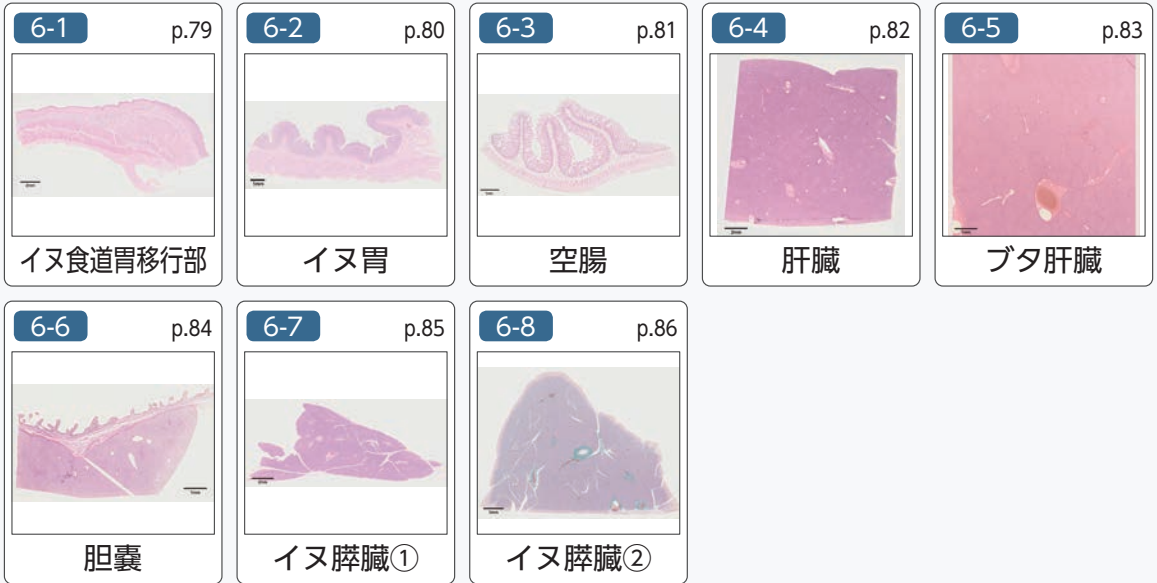
第4章 筋組織



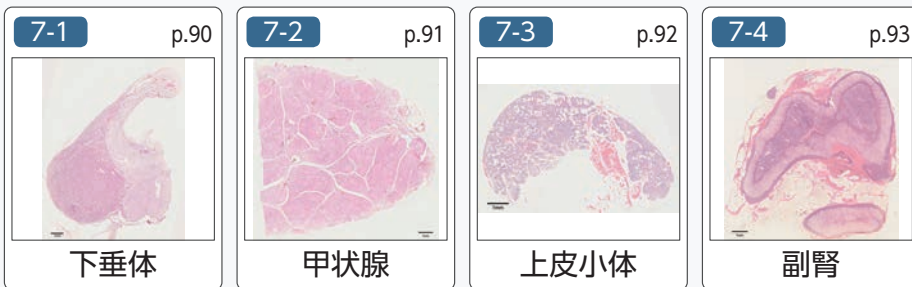
第5章 脈管とリンパ



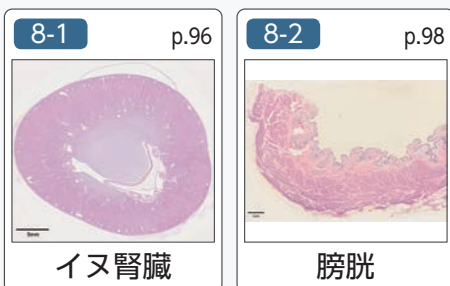
第 6 章 消化器



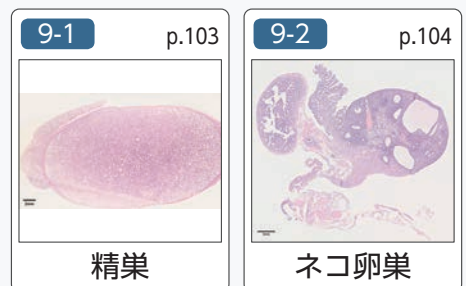
第 7 章 内分泌器



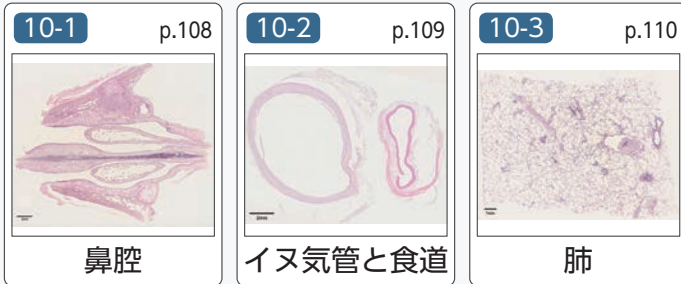
第 8 章 泌尿器



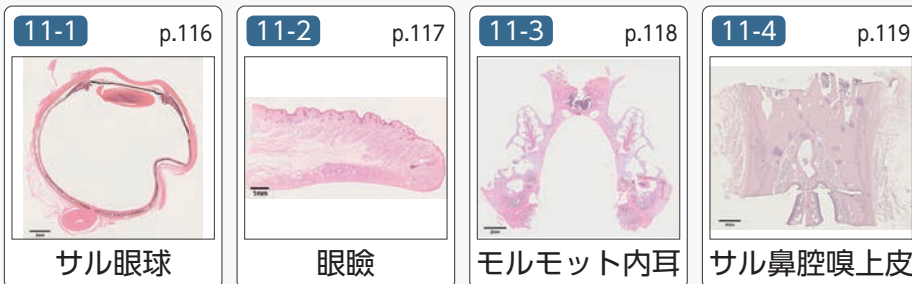
第 9 章 生殖器



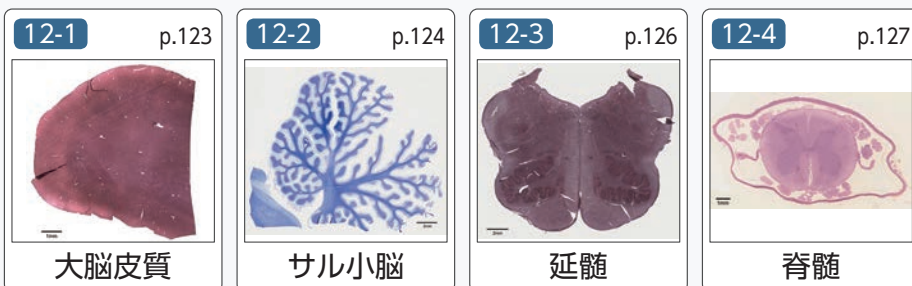
第 10 章 呼吸器



第 11 章 感覚器



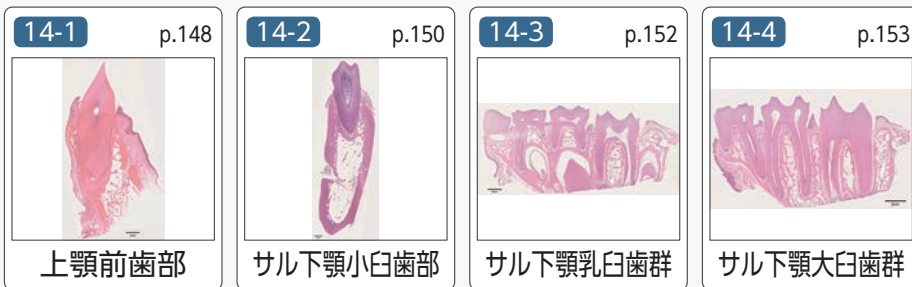
第 12 章 中枢神経



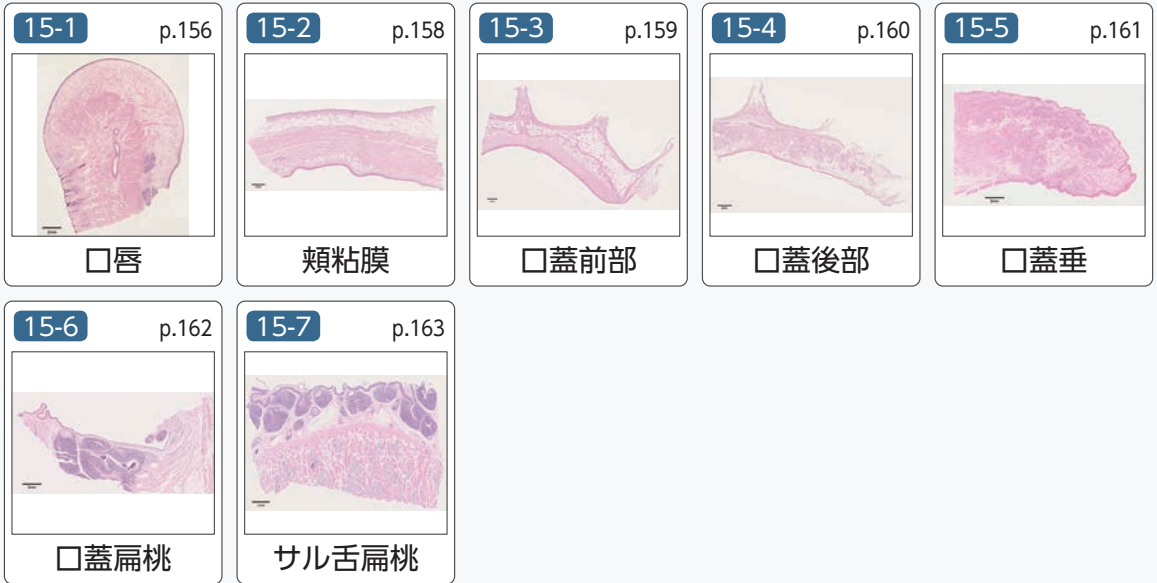
第 13 章 歯



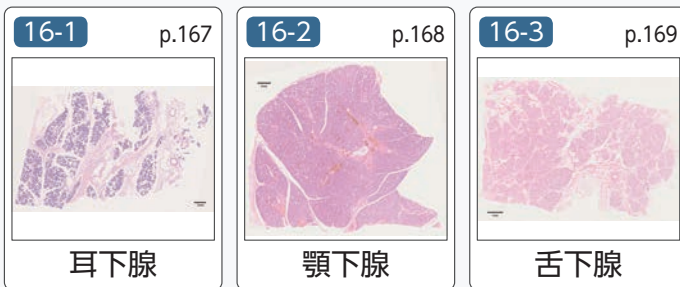
第 14 章 歯周組織



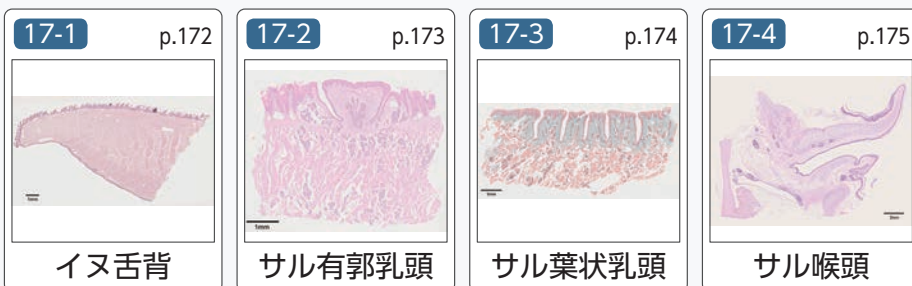
第 15 章 口腔粘膜と扁桃



第 16 章 唾液腺



第 17 章 舌と喉頭



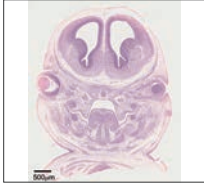
第 18 章 歯の発生

18-1 p.179



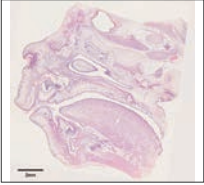
胚子顔面①

18-2 p.180



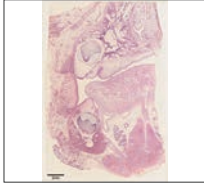
胚子顔面②

18-3 p.181



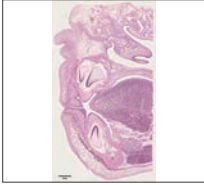
胎児顔面①

18-4 p.182



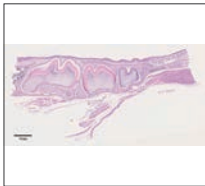
胎児顔面②

18-5 p.183



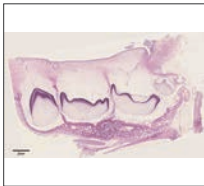
胎児顔面③

18-6 p.184



ラット
上顎臼歯部

18-7 p.185



イヌ胎仔
上顎乳臼歯部

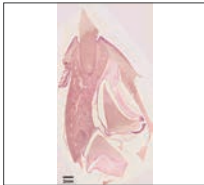
第 19 章 歯の交換

19-1 p.187



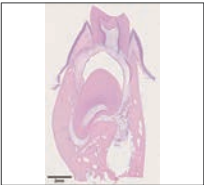
幼児期下顎

19-2 p.188



乳切歯の交換

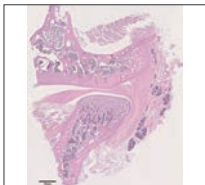
19-3 p.189



サル下顎
乳臼歯の交換

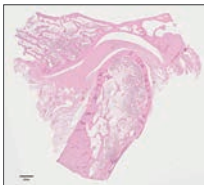
第 20 章 顎関節

20-1 p.191



サル顎関節

20-2 p.192



顎関節